









NOTE: THIS DRAWING IS PROPRIETARY INFORMATION OF THE PRISON INDUSTRY AUTHORITY AND IS NOT TO BE DISCLOSED IN PART OR AS A WHOLE WITHOUT PRIOR WRITTEN CONSENT AND PERMISSION OF THE PRISON INDUSTRY AUTHORITY.

**CAD-DRAWING**  
THIS DRAWING WAS CREATED ON A COMPUTER AIDED DESIGN (CAD) SYSTEM. TO INSURE THE INTEGRITY OF THE DATA BASE, ALL CHANGES/ REVISIONS MUST BE MADE ON THE CAD SYSTEM.

REVISION	DATE
A	11/18/2019

**TOOLS REQUIRED:**

-  FLAT SCREWDRIVER
-  PHILLIPS SCREWDRIVER
-  PRY BAR
-  ADJUSTABLE PLIERS
-  RUBBER Mallet
-  UTILITY KNIFE
-  PUTTY KNIFE
-  PERSONAL PROTECTIVE EQUIPMENT (PPE)

**MATERIAL TYPE:**

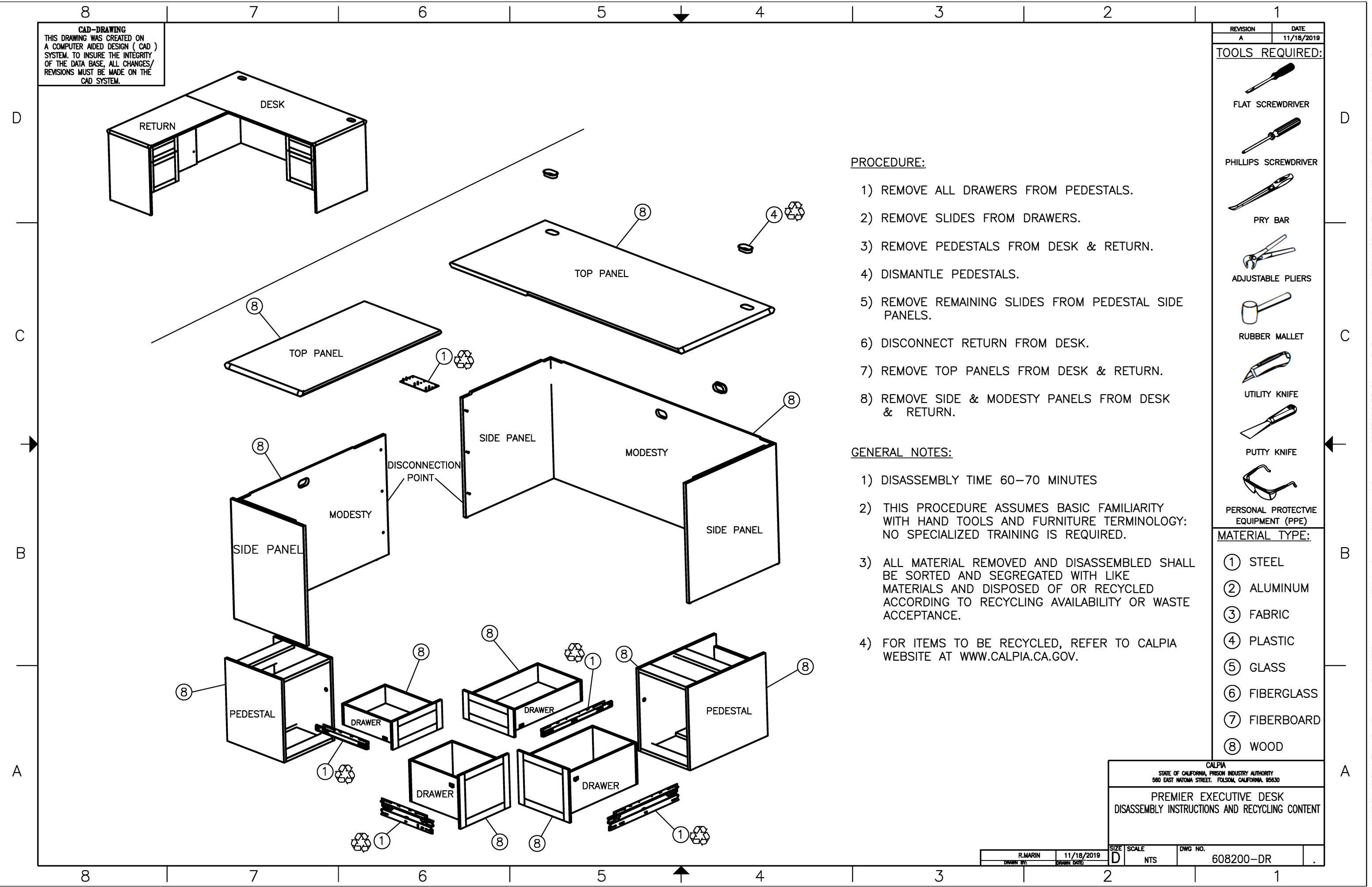
- ① STEEL
- ② ALUMINUM
- ③ FABRIC
- ④ PLASTIC
- ⑤ GLASS
- ⑥ FIBERGLASS
- ⑦ FIBERBOARD
- ⑧ WOOD

**PROCEDURE:**

- 1) REMOVE ALL DRAWERS FROM PEDESTALS.
- 2) REMOVE SLIDES FROM DRAWERS.
- 3) REMOVE PEDESTALS FROM DESK & RETURN.
- 4) DISMANTLE PEDESTALS.
- 5) REMOVE REMAINING SLIDES FROM PEDESTAL SIDE PANELS.
- 6) DISCONNECT RETURN FROM DESK.
- 7) REMOVE TOP PANELS FROM DESK & RETURN.
- 8) REMOVE SIDE & MODESTY PANELS FROM DESK & RETURN.

**GENERAL NOTES:**

- 1) DISASSEMBLY TIME 60-70 MINUTES
- 2) THIS PROCEDURE ASSUMES BASIC FAMILIARITY WITH HAND TOOLS AND FURNITURE TERMINOLOGY: NO SPECIALIZED TRAINING IS REQUIRED.
- 3) ALL MATERIAL REMOVED AND DISASSEMBLED SHALL BE SORTED AND SEGREGATED WITH LIKE MATERIALS AND DISPOSED OF OR RECYCLED ACCORDING TO RECYCLING AVAILABILITY OR WASTE ACCEPTANCE.
- 4) FOR ITEMS TO BE RECYCLED, REFER TO CALPIA WEBSITE AT [WWW.CALPIA.CA.GOV](http://WWW.CALPIA.CA.GOV).



CALPIA  
STATE OF CALIFORNIA, PRISON INDUSTRY AUTHORITY  
580 EAST NATOMA STREET, FOLSOM, CALIFORNIA, 95630

**PREMIER EXECUTIVE DESK**  
DISASSEMBLY INSTRUCTIONS AND RECYCLING CONTENT

SIZE	SCALE	DWG. NO.
D	NTS	608200-DR