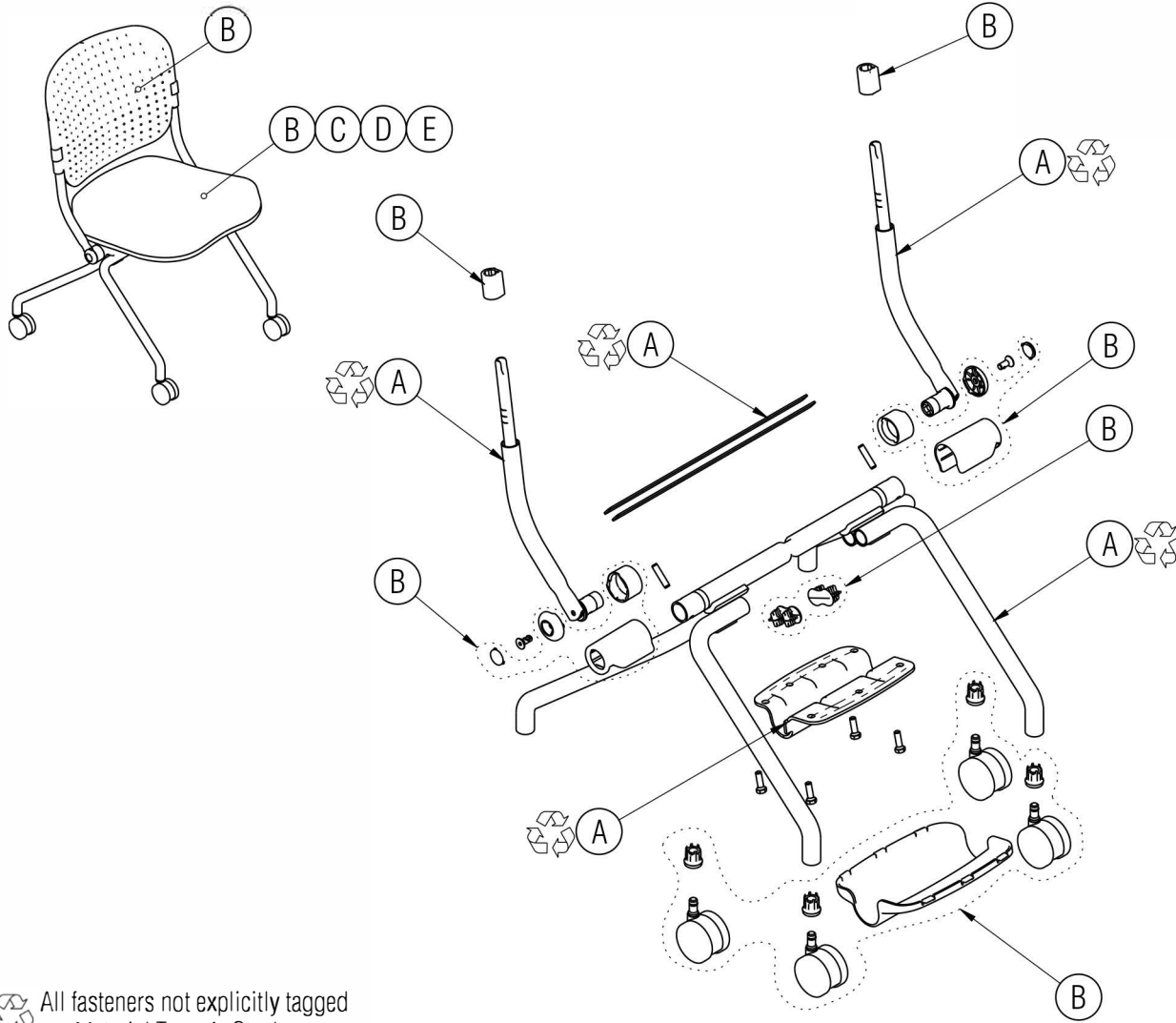


# Disassembly Instructions

Pacifica Chair

Material Type: A. Steel B. Plastic C. Foam D. Wood E. Fabric




## Procedure:

1. Knock the backrest upwards off the chair frame from underneath. Remove the armrest inserts from the back.
2. Pry off the cover under the seat to expose the seat support plate. Remove the screws holding the support plate to the seat and remove the seat and support plate.
3. Pry off the end caps from the backrest supports and remove the screws holding the support onto the the seat frame. Pull off the outer bushing. Rotate the inner bushing so that the slot lines up with the pin. Push back on the support which will allow the pin to be removed. Pull off the supports and inner bushings off the frame and pull out the leaf springs.
4. Pry out the caps from the seat frame tubes underneath the seat.
5. Pry out the casters and caster bushings from the chair base.

## General Notes:

1. Disassembly time: 15-20 minutes
2. This procedure assumes basic familiarity with hand tools and furniture terminology: no specialized training is required
3. All materials removed and disassembled shall be sorted and segregated with like materials and disposed of or recycled according to recycling availability or waste acceptance

 All fasteners not explicitly tagged are Material Type A: Steel

## Required Tools

