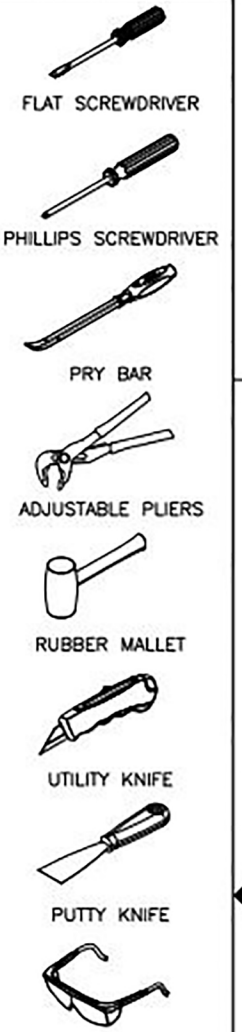


CAD-DRAWING
 THIS DRAWING WAS CREATED ON
 A COMPUTER AIDED DESIGN (CAD)
 SYSTEM. TO INSURE THE INTEGRITY
 OF THE DATA BASE, ALL CHANGES/
 REVISIONS MUST BE MADE ON THE
 CAD SYSTEM.

REVISION	DATE
A	02/16/16

TOOLS REQUIRED:



MATERIAL TYPE:

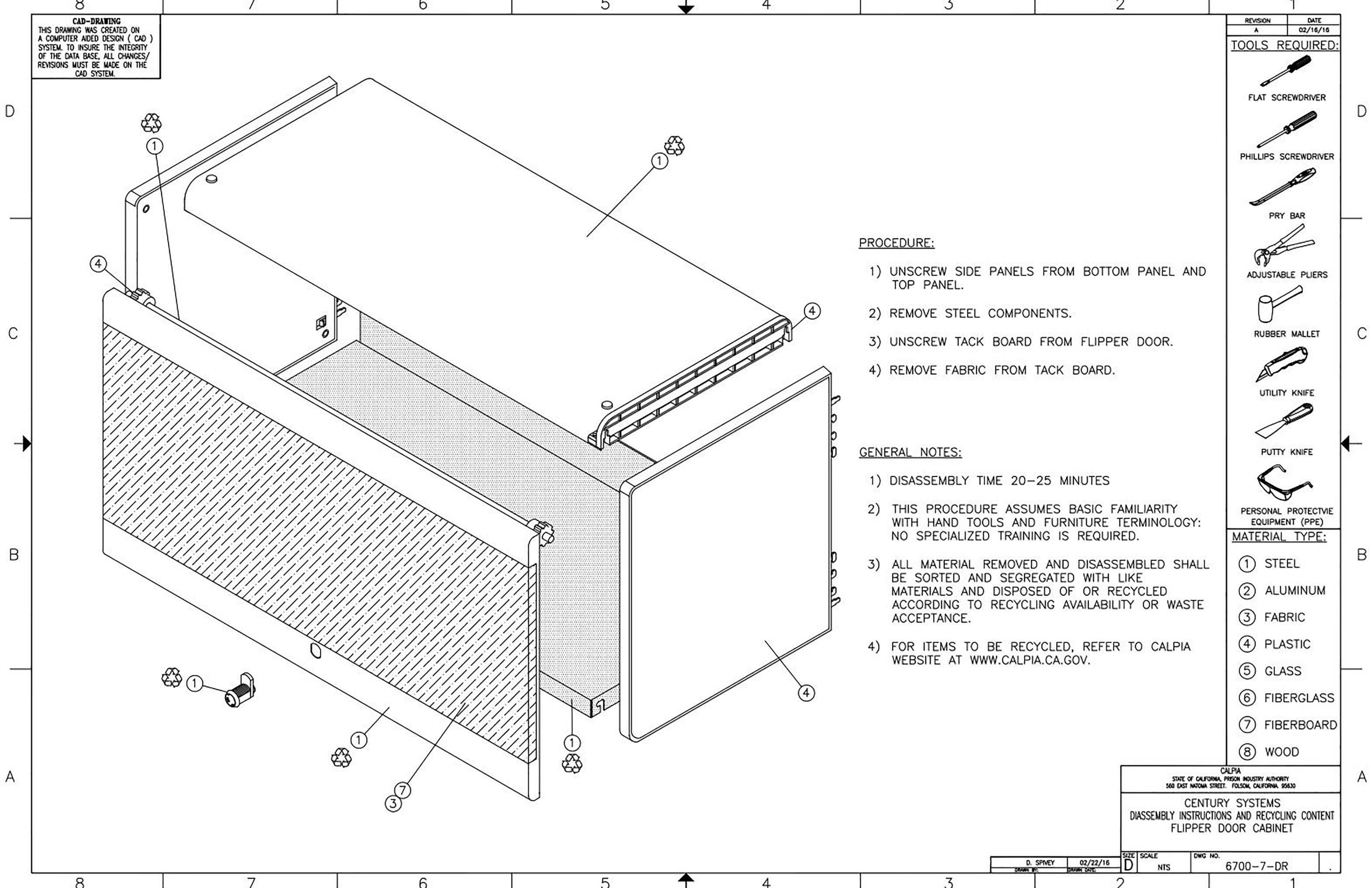
- ① STEEL
- ② ALUMINUM
- ③ FABRIC
- ④ PLASTIC
- ⑤ GLASS
- ⑥ FIBERGLASS
- ⑦ FIBERBOARD
- ⑧ WOOD

PROCEDURE:

- 1) UNSCREW SIDE PANELS FROM BOTTOM PANEL AND TOP PANEL.
- 2) REMOVE STEEL COMPONENTS.
- 3) UNSCREW TACK BOARD FROM FLIPPER DOOR.
- 4) REMOVE FABRIC FROM TACK BOARD.

GENERAL NOTES:

- 1) DISASSEMBLY TIME 20-25 MINUTES
- 2) THIS PROCEDURE ASSUMES BASIC FAMILIARITY WITH HAND TOOLS AND FURNITURE TERMINOLOGY: NO SPECIALIZED TRAINING IS REQUIRED.
- 3) ALL MATERIAL REMOVED AND DISASSEMBLED SHALL BE SORTED AND SEGREGATED WITH LIKE MATERIALS AND DISPOSED OF OR RECYCLED ACCORDING TO RECYCLING AVAILABILITY OR WASTE ACCEPTANCE.
- 4) FOR ITEMS TO BE RECYCLED, REFER TO CALPIA WEBSITE AT WWW.CALPIA.CA.GOV.



CALPIA
 STATE OF CALIFORNIA, PRISON INDUSTRY AUTHORITY
 560 EAST NINTOMA STREET, FOLSOM, CALIFORNIA, 95630

CENTURY SYSTEMS
 DISASSEMBLY INSTRUCTIONS AND RECYCLING CONTENT
 FLIPPER DOOR CABINET

D. SPNEY	02/22/16	SIZE D	SCALE NTS	DWG NO. 6700-7-DR
<small>DRAWN BY:</small>	<small>DRAWN DATE:</small>			