
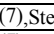
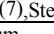
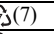
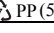
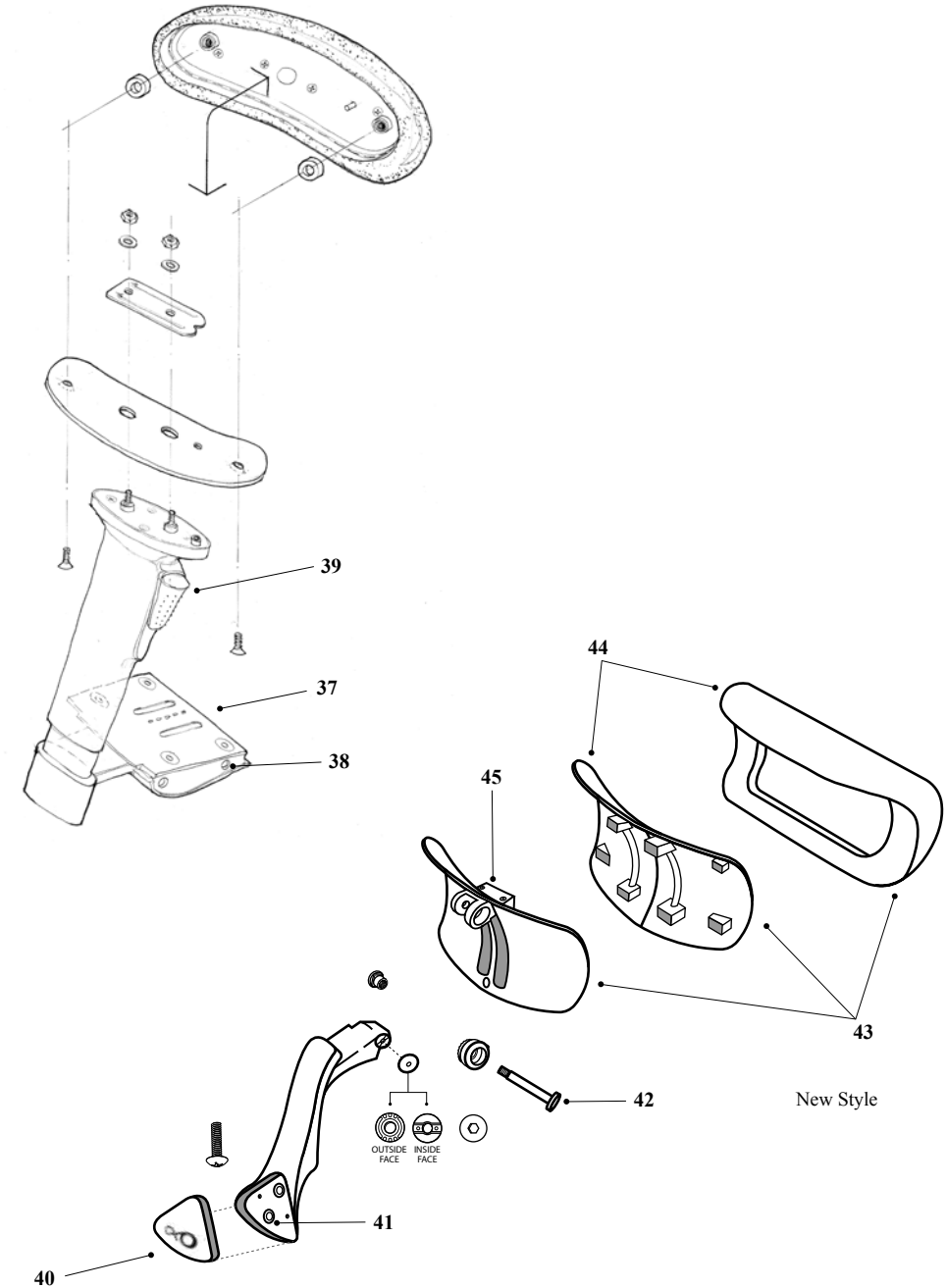


CALPIA Disassembly Instructions for Boston 24/7 - Page 3

****Items are listed in suggested order of disassembly - Estimated Time Required - 25 minutes**

ITEM	DESCRIPTION	QTY	MATERIAL(S)		TOOL(S)	PROCEDURE
37	Arm Bottom Plate	2	GFN  (7),Steel	Y	A	Remove screws from steel plate
38	Arm Bottom	2	GFN  (7),Steel	Y	C	Remove adjustment nuts
39	Arm Button	2	Aluminum	Y	A,D	Remove arm button by prying out with screwdriver or use hammer
40	Headrest Logo Cover	1	Plastic  (7)	Y	A	Pry off logo cover
41	Headrest Assembly	1	Plastic  (5),Aluminum	Y	A	Use screwdriver to remove from back
42	Headrest Bracket	1	Aluminum	Y	C	Disassemble from upholstered parts
43	Headrest Upholstered Assembly	1	PU Foam, Plastic PP (5),GFN (7)	Y	A	Use hands and screwdriver to pry apart assembly
44	Headrest Upholstery	1	PU Foam, Plastic PP (5)	Y	E,F	Cut foam and fabric using knife and remove staples with pliers. Remove any foam from plastic with steam.
45	Headrest Outer Shell	1	Plastic GFN (7)	Y	A	Remove screws from adjuster and separate parts



A. Screwdriver



B. Wrench



C. Allen Key



D. Hammer



E. Knife



F. Pliers